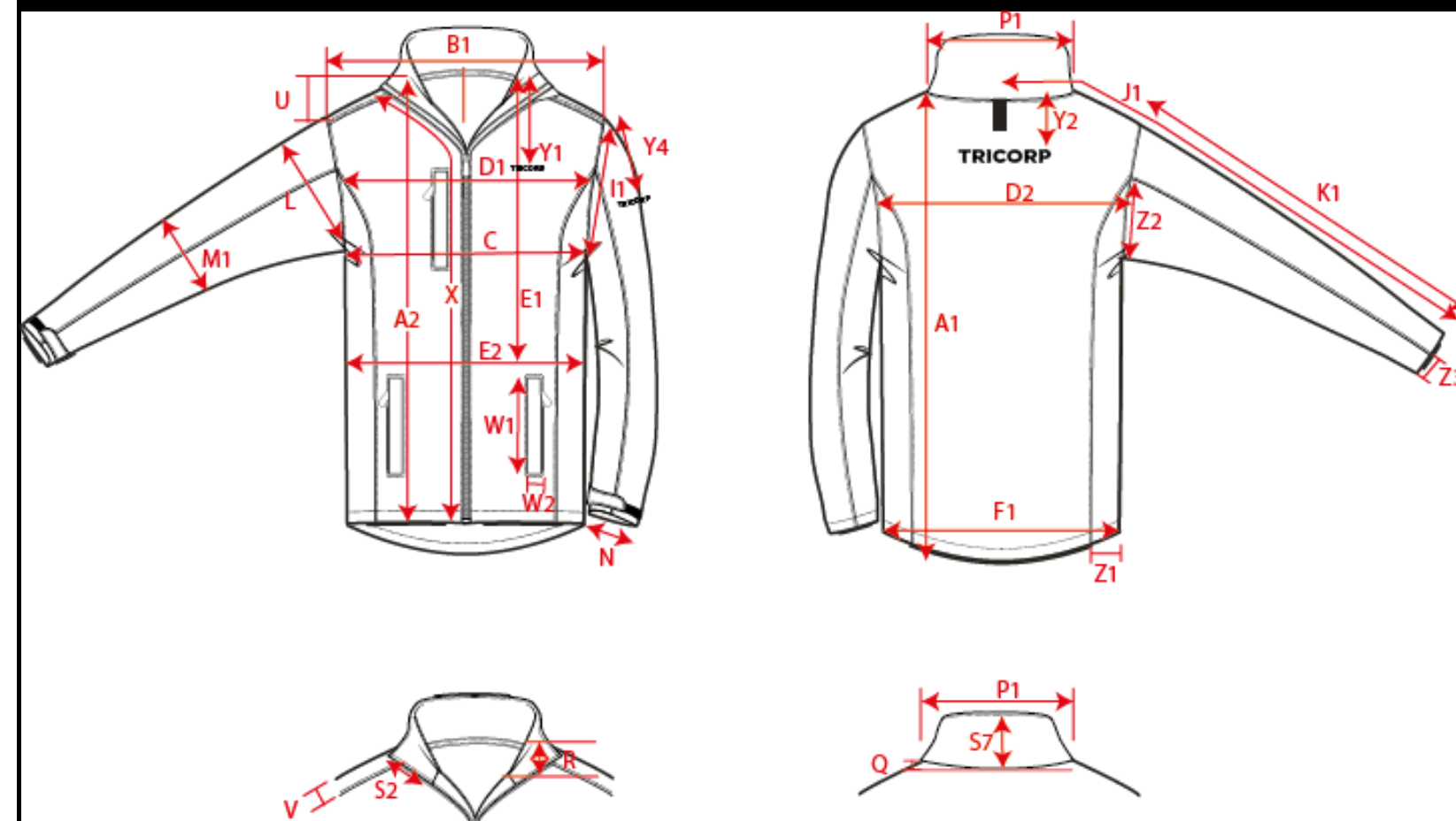


Production Size Specification

TRICORP



Sketch is for how to measure NOT for style

|                     |   |
|---------------------|---|
| Stylenumber:        | 402002  |
| Styledescription:   | Softshell Bicolor   |
| Productgroup:       | Jassen  |
| Label:              | Workwear  |
| Sexe:               | Unisex  |
| Fabric Description: | Platbinding, PU laag  |
| Compositon:         | 100 % Polyester   |
| Weight:             | 340 g/m <sup>2</sup>  |
| Color:              | Blackgrey, Blacklime, Blackorange, Blackred, BlackTurquoise, Dgreyblack, LGreyblack, Navyred, Navyroyalblue, Royalbluenavy, Whitedarkgrey, Whitemidgrey, Navy |
| Spec from batch nr: |   |
| Date:               | 13-8-2019   |

|    |                              | XS   | S   | M    | L   | XL   | XXL | 3XL  | 4XL  | 5XL  | 6XL  | 7XL  | 8XL  | Tol |  |  |  |  |
|----|------------------------------|------|-----|------|-----|------|-----|------|------|------|------|------|------|-----|--|--|--|--|
|    |                              | 177  | 179 | 181  | 183 | 185  | 187 | 189  | 191  | 193  | 193  | 193  | 194  |     |  |  |  |  |
| A1 | Total backl meas from hsp    | 69   | 71  | 73   | 75  | 77   | 79  | 81   | 83,5 | 84,8 | 86   | 87,3 | 90,5 | 1,0 |  |  |  |  |
| B1 | Shoulder to shoulder         | 42,5 | 45  | 47,5 | 50  | 52,5 | 55  | 57,5 | 59,5 | 61,5 | 63,5 | 65,5 | 67,5 | 1,0 |  |  |  |  |
| C  | 1/2 chest (at armhole)       | 48   | 52  | 56   | 60  | 64   | 68  | 72   | 78   | 84   | 90   | 96   | 102  | 1,0 |  |  |  |  |
| K1 | Upper arm length long sleeve | 66   | 67  | 67   | 68  | 69   | 70  | 70   | 71   | 72   | 72   | 72   | 72   | 0,5 |  |  |  |  |