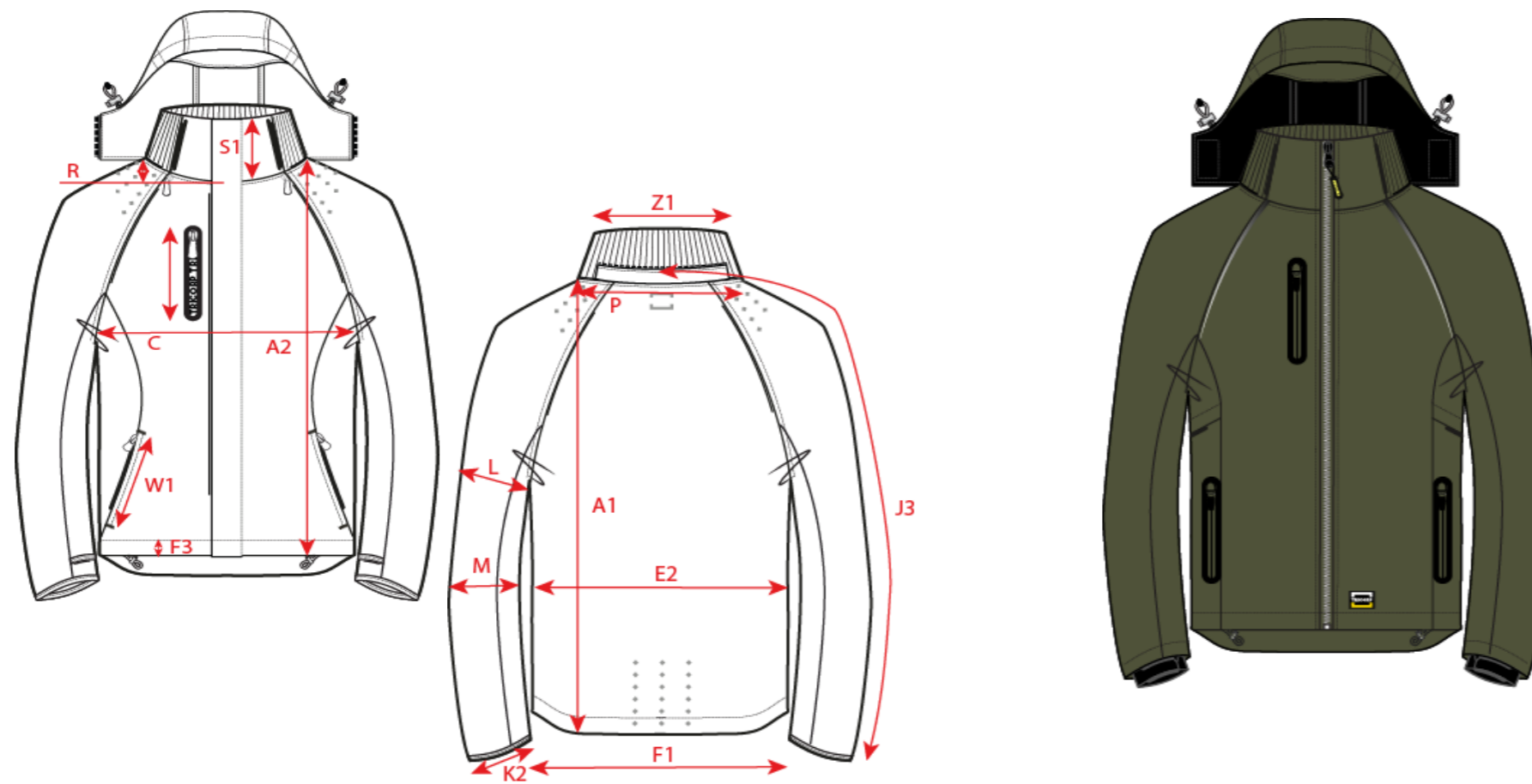


Production Size Specification

TRICORP



<b>Stylenumber:</b>	402018
<b>Styledescription:</b>	Tech Shell
<b>Productgroup:</b>	Jassen
<b>Label:</b>	Workwear
<b>Sexe:</b>	Unisex
<b>Fabric Description:</b>	platbinding, PU laag
<b>Compositon:</b>	100 polyester
<b>Weight:</b>	145gr/m2
<b>Color:</b>	INK/DARKGREY/BLACK/ARMY/ NAVY
<b>Spec from batch nr:</b>	
<b>Date:</b>	10-9-2019

		XS	S	M	L	XL	XXL	3XL	4XL	5XL	6XL	7XL	8XL	Tol
A1	Total backl meas from hsp	73	75	77	79	81	83	85	87,5	88,8	90	91,3	94,5	1,0
B1	Shoulder to shoulder	44,5	47	49,5	52	54,5	57	59,5	61,5	63,5	65,5	67,5	69,5	
C	1/2 chest (at armhole)	50	54	58	62	66	70	74	80	86	92	98	104	
J3	Sleeve length msrd from CB long sleeve raglan	87,3	89,5	90,8	93	95,3	97,5	98,8	101	103	104	105	106	1