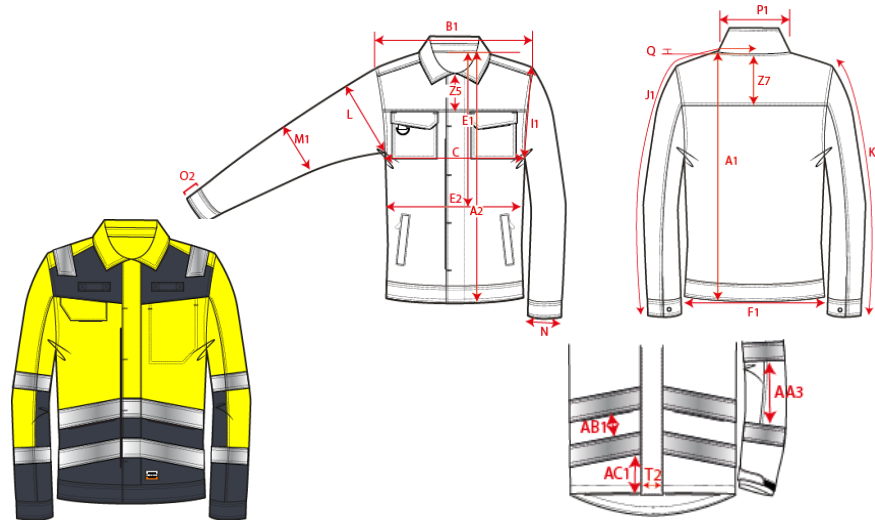


Production Size Specification

TRICORP



Sketch is for how to measure NOT for style

<b>Stylenumber:</b>	403015
<b>Styledescription:</b>	Werkjas Multinormen Bi-color
<b>Productgroup:</b>	Jackets
<b>Label:</b>	Safety
<b>Sexe:</b>	Unisex
<b>Fabric Description:</b>	Twill
<b>Compositon:</b>	74% cot/ 25% pes/ 1% other fibers
<b>Weight:</b>	320 gm2
<b>Color:</b>	Fluor Yellow Ink
<b>Spec from batch nr:</b>	
<b>Date:</b>	23-10-2019

		XS	S	M	L	XL	XXL	3XL	4XL	5XL	6XL	7XL	8XL	Tol
		177	179	181	183	185	187	189	191	193	193	193	194	
A1	Total backl meas from hsp	69	71	73	75	77	79	81	83,5	84,8	86	87,3	90,5	1,0
B1	Shoulder to shoulder	42	44,5	47	49,5	52	54,5	57	59	61	63	65	67	1,0
C	1/2 chest (at armhole)	46	50	54	58	62	66	70	76	82	88	94	100	1,0
K1	Upper arm length long sleeve	66,2	67,2	67,2	68,2	69,2	70,2	70,2	71,2	72,2	72,2	72,2	72,2	0,5