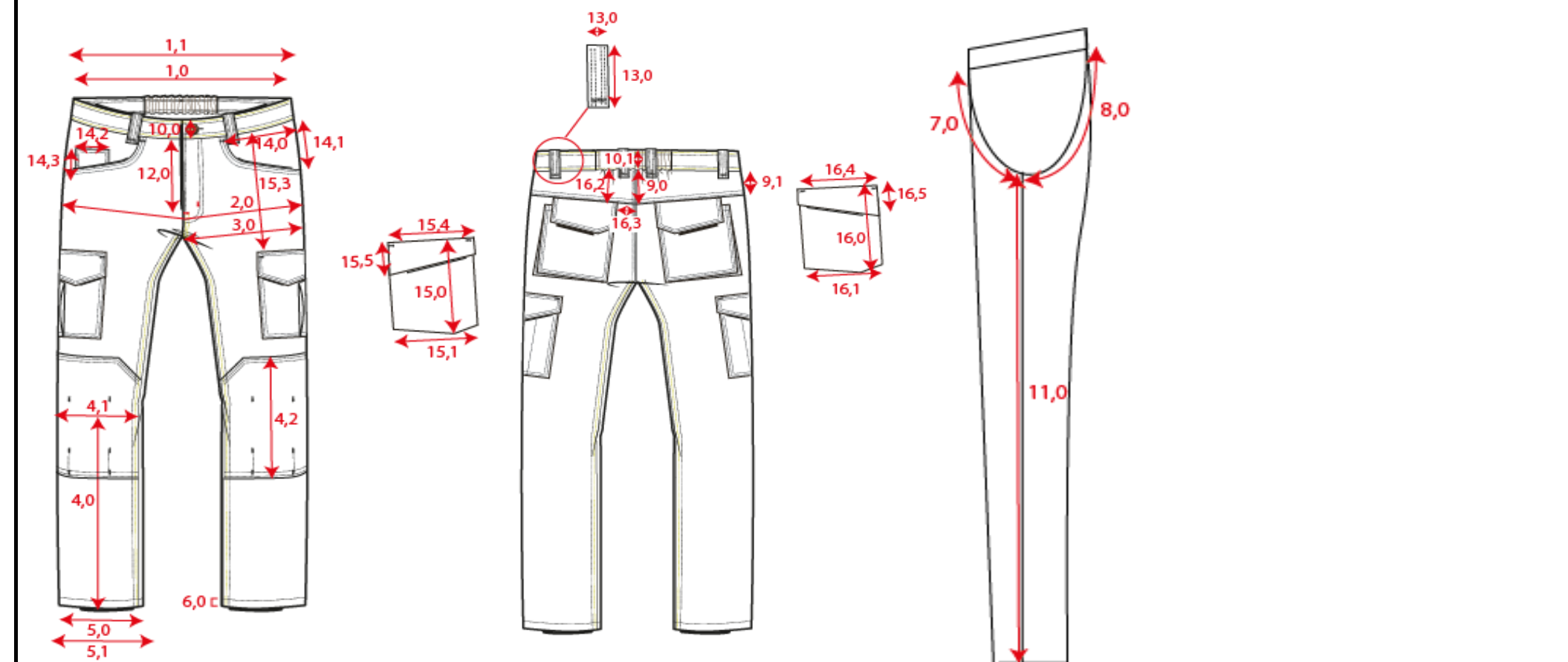


Production Size Specification

TRICORP



Sketch is for how to measure NOT for style

<b>Stylenumber:</b>	502020
<b>Styledescription:</b>	Werkbroek Twill Cordura Stretch
<b>Productgroup:</b>	Workers
<b>Label:</b>	Workwear
<b>Sexe:</b>	Men
<b>Fabric Description:</b>	Twill mechanical stretch
<b>Compositon:</b>	65% Polyester/ 35% Cotton mechanical stretch
<b>Weight:</b>	280 gm2
<b>Color:</b>	Darkgrey, Navy,Black, Ink, Army
<b>Spec from batch nr:</b>	
<b>Date:</b>	3-10-2018

		21	22	23	24	25	26	27												
																	<b>Tol</b>			
1,0	1/2 Waist relaxed	35	37,5	40	42,5	45	47,5	50									1,0			
2,0	1/2 Hip (under zip)	45	47,5	50	52,5	55	57,5	60									1,0			
11,0	Inseam, short	78	78	78	78	78	78	78									0,5			
		42	44	46	48	50	52	54	56	58	60	62	64	66						
1,0	1/2 Waist relaxed	35	37,5	40	42,5	45	47,5	50	52,5	55	57,5	61,5	65,5	69,5			1,0			
2,0	1/2 Hip (under zip)	45	47,5	50	52,5	55	57,5	60	62,5	65	67,5	71,5	75,5	79,5			1,0			
11,0	Inseam, normal	83	83	83	83	83	83	83	83	83	83	83	83	83			0,5			
		43	45	47	49	51	53	55												
1,0	1/2 Waist relaxed	35	37,5	40	42,5	45	47,5	50									1,0			
2,0	1/2 Hip (under zip)	45	47,5	50	52,5	55	57,5	60									1,0			
11,0	Inseam, long	88	88	88	88	88	88	88									0,5			